

JR SERIES FEATURES

INTERCHANGEABLE WITH SPRINGVILLE® AND ADVANCED® "B" SERIES

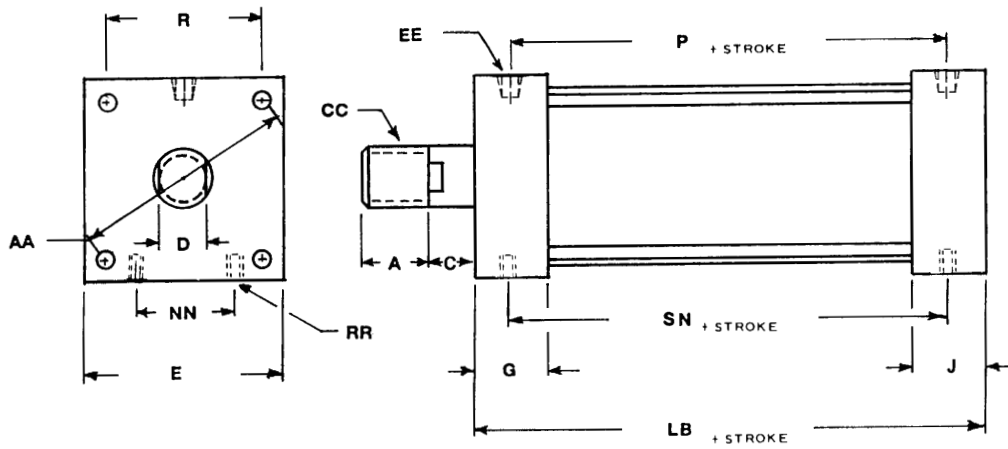
- Hex Tie Rod Nut (Not Slotted)
- Heads & Caps High Tensile Bar Stock
- Nylon Piston Wear Band
- Extra Long Bronze Rod Bearing
- All Steel Parts Plated
- Stainless Rod*
- Stainless Tie Rod*
- Polyurethane Coating For Corrosive Applications*
- Magnetic Piston (Use M Prefix To Series)*
- Generous Breakaway Groove

*Optional Feature

How To Order

MOUNTING		SERIES	BORE	STROKE [▲]	ROD DIA	ROD END	CUSHION	OPTIONS	
Example	MRI -	JR -	3 -	4 -	¾ -	FM -	NC -	PC	
MR1	Head Male Rabbet		2"	1"	¾"		CCE = Back	V =	Viton
MP1	Rear Clevis (Detachable)		2½"	2"	¾"		CHE = Front	S =	Stainless Rod
			3"	3"	¾"		CBE = Both	NL =	Non Lube Service
			3½"	4"	1"			PC =	Polycoat
			4½"	5"	1"			ST =	Stop Tube
			5"	6"	1"			EP =	Ethylene Propylene Seals
				7"				QO =	Bumpers
				8"				SS =	SS. Tie Rods

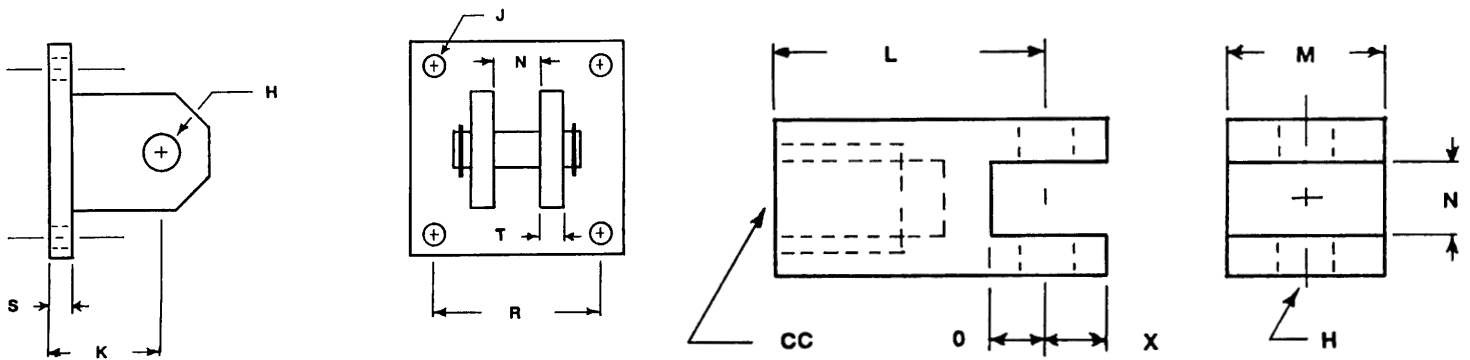
▲ Standard Stock Stroke Lengths Listed. All Stroke Lengths to 120" Available.



DIMENSIONS

BORE	ROD DIA.	A	C	D	E	G	J	P	R	AA	CC	EE	LB*	NN	RR	SN
2	.75	1.50	.75	.62	2.50	1.50	1.00	2.79	1.84	2.60	3/4-10	1/4	3.79	1.00	5/16-24	2.60
2½	.75	1.50	.75	.62	3.00	1.50	1.00	2.79	2.19	3.10	3/4-10	3/8	3.79	1.25	5/16-24	2.60
3	.75	1.50	.75	.62	3.50	1.50	1.00	2.79	2.62	3.70	3/4-10	3/8	3.79	1.25	5/16-24	2.60
3½	1.00	1.62	1.00	.87	4.12	1.43	1.43	2.88	3.22	4.55	1-8	1/2	4.54	1.84	1/2-20	3.10
4½	1.00	1.62	1.00	.87	5.12	1.43	1.43	2.88	4.02	5.69	1-8	1/2	4.54	2.50	1/2-20	3.10
5	1.00	1.62	1.00	.87	5.50	1.50	1.50	3.07	4.10	5.81	1-8	1/2	4.79	2.68	1/2-20	3.29

*IF CBE OR CCE ADD ONE "J" DIM



REAR CLEVIS

BORE	2	2½	3	3½	4½	5
H	.62	.62	.62	.75	.75	.75
J	.32	.32	.32	.51	.51	.51
K	1.43	1.50	1.81	2.06	2.37	2.37
N	.50	.50	.50	.50	.50	.50
R	1.84	2.19	2.62	3.22	4.02	4.10
S	.37	.37	.37	.37	.37	.56
T	.37	.37	.37	.37	.37	.56

ROD CLEVIS

BORE	2	2½	3	3½	4½	5
H	.62	.62	.62	.75	.75	.75
L	2.07	2.07	2.07	2.32	2.32	2.32
M	1.12	1.12	1.12	1.25	1.25	1.25
N	.50	.50	.50	.50	.50	.50
O	.84	.84	.84	1.03	1.03	1.03
X	.56	.56	.56	.75	.75	.75
CC	3/4-10x1	3/4-10x1	3/4-10x1	1-8x1	1-8x1	1-8x1

REPAIR KITS

BORE	ROD DIA.	PART NO.	PART NO.	PART NO.
2	PS-08-JR	CA-12-JR	RG-12-JR	CS-12-JR
2 1/2	PS-10-JR	CA-12-JR	RG-12-JR	CS-12-JR
3	PS-12-JR	CA-12-JR	RG-12-JR	CS-12-JR
3 1/2	PS-14-JR	CA-16-JR	RG-16-JR	CS-16-JR
4 1/2	PS-18-JR	CA-16-JR	RG-16-JR	CS-16-JR
5	PS-20-JR	CA-16-JR	RG-16-JR	CS-16-JR

PREFIX "PS" REPAIR KITS WITH "M" FOR MAGNETIC

Piston Seal (PS-JR) Kit

Piston Bearing
Piston Seal (2) pcs.
Tube Seal (2) pcs.

Cushion Seal (CS-JR) Kit

Cushion Seal (2) pcs.
Cushion Adjustment
Needles (2) pcs.

Rod Gland (RG-JR) Kit

Rod Wiper
Rod Seal
"O" Ring
Snap Ring

Cartridge assembly (CA-JR) may be ordered separately. The cartridge assembly is shipped assembled with all parts and one snap ring.

ACCESSORIES

ROD CLEVIS

PART NO.	ROD DIA.	THREAD SIZE
JR-1212	.75	3/4-10
JR-1616	1.00	1-8

ROD CLEVIS SUPPLIED
WITH PIN AND E-RINGS

ROD CLEVIS PIN

PART NO.	ROD DIA.	PIN DIA.
JR-1010	.75	.62
JR-1011	1.00	.75

PIN SUPPLIED
WITH E-RINGS

REAR CLEVIS MOUNT

PART NO.	BORE SIZE	PIN DIA.
JR-1608	2	.62
JR-1610	2 1/2	.62
JR-1612	3	.62
JR-1614	3 1/2	.75
JR-1618	4 1/2	.75
JR-1620	5	.75

REAR CLEVIS MOUNT SUPPLIED
WITH PIN AND E-RINGS

REAR CLEVIS PIN

PART NO.	BORE SIZE	PIN DIA.
JR-1012	2, 2 1/2, 3	.62
JR-1013	3 1/2, 4 1/2	.75
JR-1014	5	.75

PIN SUPPLIED
WITH E-RINGS