



BRP SERIES (Bimba® Interchange)

FEATURES

- Body: Black Hard Coat Anodized 2011 Aluminum Closely Controlled Surface Finish. 16-24 Micro Inch.
- Head: Up to 2" Bore Machined from Brass Stock Over 2" Bore Anodized 2011 Aluminum with Inserted Bushing
- Piston: 2011 Aluminum Over 2" Bore Additional Nylon Bearing in BRPSR Models
- Rod: Stainless 303 Steel
- Seals and Packings: Piston & Body Seals Buna N O-Rings Rod Packing: Buna N Block-V
- Pressure Range: Up to 250 PSI
- Temperature Range: -40 to 300°



FRP SERIES (Fabco® Interchange)

FEATURES

- Body: Black Hard Coat Anodized 2011 Aluminum Closely Controlled Surface Finish. 16-24 Micro Inch.
- Head: Up to 2" Bore Machined from Brass Stock Over 2" Bore Anodized 2011 Aluminum with Inserted Bushing
- Piston: 2011 Aluminum Over 2" Bore Additional Nylon Bearing in FRPSR Models
- Rod: Stainless 303 Steel
- Seals and Packings: Piston & Body Seals Buna N O-Rings Rod Packing: Buna N Block-V
- Pressure Range: Up to 250 PSI
- Temperature Range: -40 to 300°

BRP Series

Reduced Profile Cylinders

MOUNTING STYLES:

- Pivot Mount (see Drawing): Specify 1
- Pivot Mount 90° to Ports: Specify 1N
- Threaded Mounting Holes, Both Ends, Thread Size: D (see Drawing): Specify 3
- Screw Clearance Hole front for D SHCS (see Drawing): Specify 4F
- Screw Clearance Hole Rear for D SHCS: Specify 4R

OTHER OPTIONS:

- Coarse Female Rod Thread: Specify CFT (see Drawing)
- Male Rod End Fine Thread: Specify MT
- Male Rod End Coarse Thread: Specify CMT
- Non Threaded Rod, No Wrench Flats: Specify NT

HOW TO SELECT AND ORDER BRP CYLINDERS:

MODEL	BORE SIZE	STROKE LENGTH	MOUNTING STYLES SEE ABOVE
BRPSR*	075 = 3/4" 250 = 2 1/2"		
OR	106 = 1 1/16" 300 = 3"		
BRPDR	150 = 1 1/2" 400 = 4"		
	200 = 2"		

OTHER
OPTIONS
(SEE ABOVE)

BRPDR-250-0.625-1N-CMT

Example Illustrated Above:

Reduced Profile Cylinder, Double Acting, Double End, 2 1/2" Bore, 5/8" Stroke, Pivot Mount, 90° Between Ports and Pivot Pin, Male Rod End with Coarse Thread

*SR = Single Rod

DR = Double Rod

FRP Series

Reduced Profile Cylinders

MOUNTING STYLES:

- Pivot Mount (see Drawing) Pivot Pin Axis Parallel to Port Axis: Specify 1
- Pivot Mount, Pivot Pin Axis 90° to Port Axis: Specify 1N

OTHER OPTIONS:

- Coarse Female Rod Thread: Specify CFT (see Drawing)
- Male Rod End Fine Thread: Specify MT
- Male Rod End Coarse Thread: Specify CMT
- Non Threaded Rod, No Wrench Flats: Specify NT

HOW TO SELECT AND ORDER FRP CYLINDERS:

MODEL	BORE SIZE	STROKE LENGTH	MOUNTING STYLES SEE ABOVE
FRPSR*	075 = 3/4" 250 = 2 1/2"		
OR	112 = 1 1/8" 300 = 3"		
FRPDR	162 = 1 5/8" 400 = 4"		
	200 = 2"		

MALE
ROD END

FRPSR-112-0.187-1-MT

Example Illustrated Above:

Reduced Profile Cylinder, Double Acting, Single Rod End, 1 1/8" Bore, 3/16" Stroke, Pivot Axis Parallel to Port Axis, Male Rod End

*SR = Single Rod

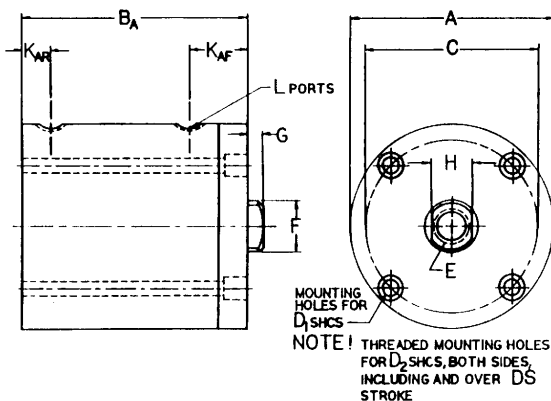
DR = Double Rod

FRP SERIES

REDUCED PROFILE CYLINDERS

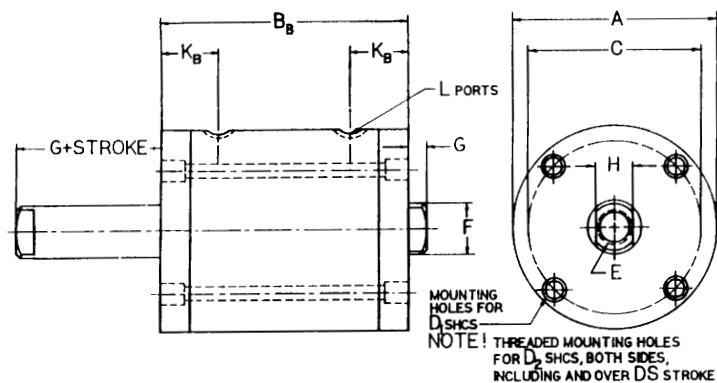
BORE SIZES: 3/4" TO 4"

MODEL FRPSR:
DOUBLE ACTING, SINGLE ROD END



CYLINDER LENGTH:
- B_A FOR FRPSR MODELS
- B_B FOR FRPDR MODELS

MODEL FRPDR:
DOUBLE ACTING, DOUBLE ROD END



CYLINDER AND ACCESSORY DIMENSIONS

BORE SIZE	3/4	1 1/8	1 3/8	2	2 1/2	3	4
A	1.500	1.990	2.740	3.240	3.740	4.240	5.500
C	1.190	1.690	2.380	2.810	3.250	3.810	5.000
D ₁	#6SHCS	#10SHCS	#10SHCS	1/4SHCS	1/4SHCS	1/4SHCS	1/4SHCS
D ₂	#8.32	#10-32	N.A.	N.A.	N.A.	N.A.	N.A.
D _S	0.750	2.000	N.A.	N.A.	N.A.	N.A.	N.A.
E	#10-32	3/16-24	3/8-24	1/2-20	1/2-20	1/2-20	3/8-18
E _{LENGTH}	0.250	0.380	0.380	0.400	0.560	0.630	0.880
LG	0.500	0.750	0.880	1.000	1.000	1.000	1.250
F	0.312	0.500	0.625	0.750	0.750	0.750	0.880
G	0.130	0.140	0.140	0.140	0.140	0.140	0.140
H	0.250	0.437	0.500	0.625	0.625	0.625	0.750
K _{AF}	0.307	0.438	0.563	0.563	0.625	0.625	0.812
K _{AR}	0.160	0.250	0.250	0.250	0.250	0.250	0.250
K _B	0.307	0.438	0.563	0.563	0.625	0.625	0.812
L	#10-32	1/8NPTF	1/8NPTF	1/8NPTF	1/8NPTF	1/8NPTF	1/8NPTF
Q	0.250	0.312	0.375	0.375	0.500	0.500	0.625
S	0.250	0.312	0.375	0.375	0.500	0.500	0.625
T	0	0.062	0.125	0.125	0.187	0.187	0.187
U	0.250	0.375	0.375	0.375	0.500	0.500	0.625
W	0.437	0.812	0.875	0.875	1.187	1.187	1.437
Y	0.625	1.000	1.250	1.250	1.625	1.625	2.000

N.A.: NOT AVAILABLE

BORE STROKE	3/4	1 1/8	1 3/8	2	2 1/2	3	4
0.062=1/16	B _A 0.700	N.A.	N.A.	N.A.	N.A.	N.A.	N.A.
	B _B 0.870	N.A.	N.A.	N.A.	N.A.	N.A.	N.A.
0.125=1/8	B _A 0.700	0.800	1.000	1.060	1.310	1.380	1.750
	B _B 0.870	1.220	1.470	1.690	1.880	1.940	2.190
0.187=3/16	B _A N.A.	0.880	N.A.	N.A.	N.A.	N.A.	N.A.
	B _B N.A.	1.220	N.A.	N.A.	N.A.	N.A.	N.A.
0.250=1/4	B _A 0.830	0.880	1.130	1.190	1.440	1.500	1.880
	B _B 1.000	1.220	1.600	1.810	2.000	2.060	2.310
0.375=3/8	B _A 0.950	N.A.	N.A.	1.310	N.A.	N.A.	N.A.
	B _B 1.120	N.A.	N.A.	1.940	N.A.	N.A.	N.A.
0.500=1/2	B _A 1.080	1.190	1.630	1.500	1.690	1.750	2.130
	B _B 1.250	1.530	2.100	2.130	2.250	2.310	2.560
0.625=5/8	B _A 1.230	N.A.	N.A.	N.A.	N.A.	N.A.	N.A.
	B _B 1.370	N.A.	N.A.	N.A.	N.A.	N.A.	N.A.
0.750=3/4	B _A 1.360	1.630	1.880	1.880	2.060	2.000	N.A.
	B _B 1.500	1.970	2.350	2.500	2.630	2.560	N.A.
1.000=1	B _A 1.700	1.880	1.190	2.250	2.190	2.250	2.630
	B _B 1.750	2.220	2.660	2.880	2.750	2.810	3.060
1.250=1 1/4	B _A 2.130	N.A.	N.A.	N.A.	N.A.	N.A.	N.A.
	B _B 2.000	2.470	N.A.	N.A.	N.A.	N.A.	N.A.
1.500=1 1/2	B _A 2.200	2.380	2.690	2.750	2.690	2.750	3.130
	B _B 2.250	2.720	3.160	3.380	3.250	3.310	3.560
1.750=1 3/4	B _A N.A.	2.810	N.A.	N.A.	N.A.	N.A.	N.A.
	B _B N.A.	3.160	N.A.	N.A.	N.A.	N.A.	N.A.
2.000=2	B _A 2.830	3.250	3.190	3.250	3.190	3.250	3.630
	B _B 2.750	3.600	3.660	3.880	3.750	3.810	4.065
3.000=3	B _A 3.830	3.850	4.190	4.250	4.190	4.250	4.630
	B _B 3.750	4.190	4.660	4.880	4.750	4.810	5.060
4.000=4	B _A 4.830	4.850	5.190	5.250	5.190	5.250	5.630
	B _B 4.750	5.190	5.660	5.880	5.750	5.810	6.060

N.A.: NOT AVAILABLE

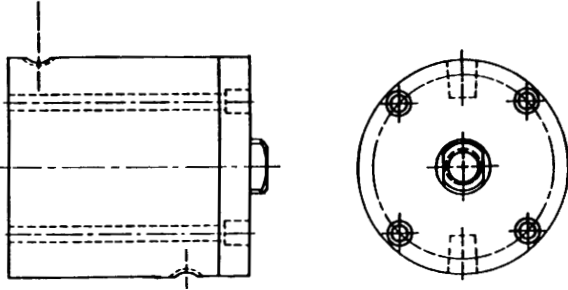
FRP SERIES

REDUCED PROFILE CYLINDERS

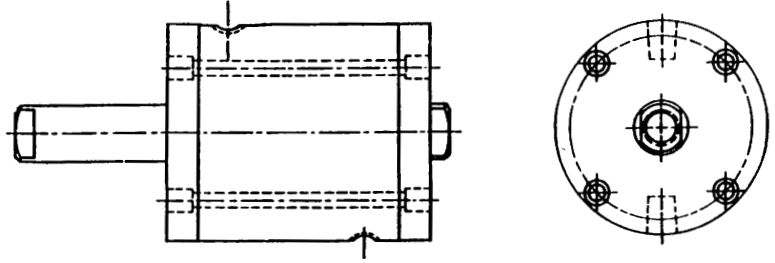
PORT LOCATION

Because of size constraints on overall lengths, ports on certain short stroke cylinders are required to be placed 180° opposite one another. The charts below indicate which bores and strokes are affected. All other bores and strokes have the ports in line with each other.

MODEL FRPSR:
DOUBLE ACTING, SINGLE ROD END



MODEL FRPDR:
DOUBLE ACTING, DOUBLE ROD END



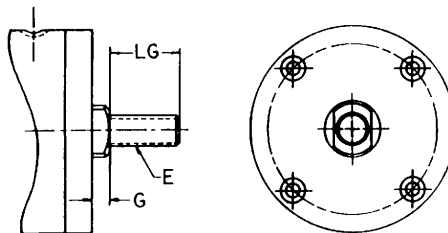
MODEL FRPSR

BORE	3/4	1 1/8	1 5/8	2	2 1/2	3	4
STROKE	.125 thru .250	.125 thru .500	.125 thru .250	.125 thru .375	.125 thru .250	.125 thru .250	—

MODEL FRPDR

BORE	3/4	1 1/8	1 5/8	2	2 1/2	3	4
STROKE	.062 thru .125	.125 thru .500	.125 thru .250	.125 thru .375	.125 thru .250	.125 thru .250	—

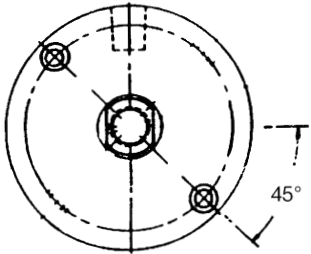
MALE ROD END (OPTION)



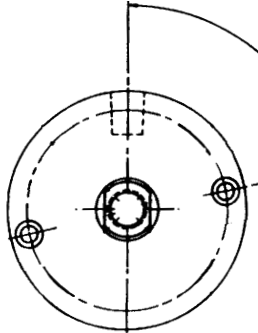
FRP SERIES

REDUCED PROFILE CYLINDERS

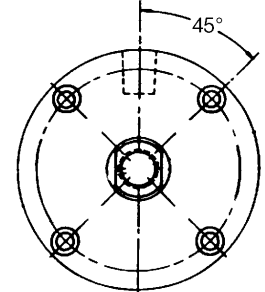
MOUNTING HOLE LOCATION



BORE	3/4	1 1/8	1 5/8
------	-----	-------	-------

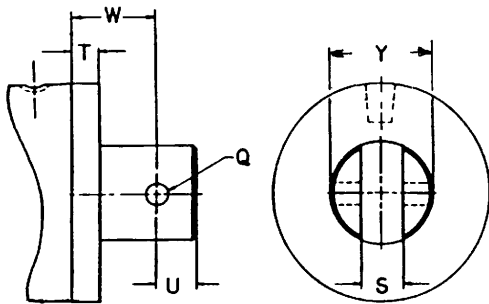


BORE	2
------	---



BORE	2 1/2	3	4
------	-------	---	---

PIVOT MOUNT (OPTION) - IN -



PIVOT MOUNT (OPTION) - I -

